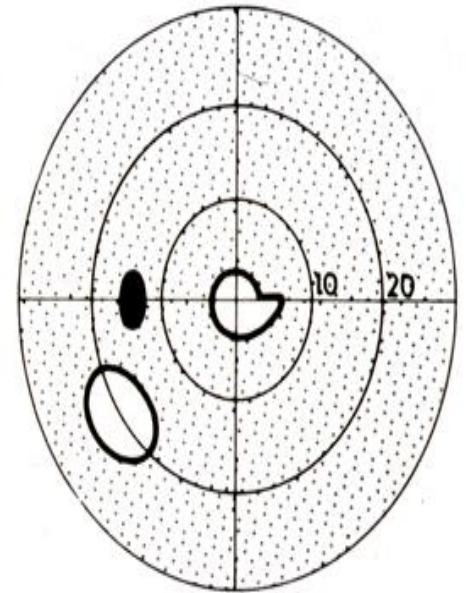
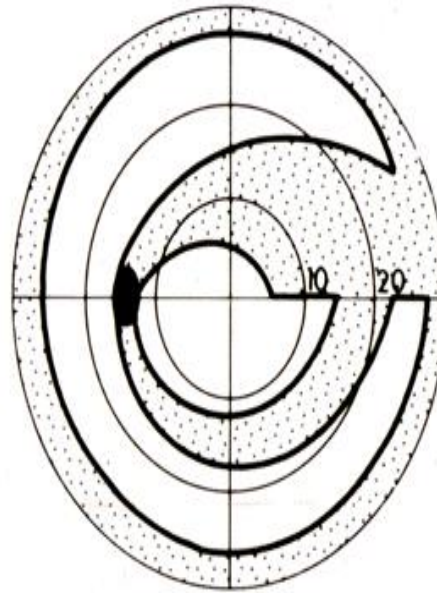


Visual Field Test

视野检查



What Is It ?

什么是视野 ?

- This is a test of how well you can see in the surrounding areas.

视野检查你可以看到多大范围的周围环境。

- In early Glaucoma, peripheral or side vision may be affected first.

早期青光眼，周边视野可能会先受到损害。

- It is used for diagnosis and monitoring of Glaucoma.

视野用于诊断和监测青光眼。

What Is It ?

什么是视野？

- In order for the doctor to interpret the test, it must be done accurately by the patient.
只有病人准确地行视野检查，医生才能解析检查结果。
- It will take only 15-20 minutes to be completed.
检查需要15-20分钟。
- It is not difficult but it requires your concentration.
检查并不难，但需要你集中精力。

- You will be asked to sit in front of a bowl shaped device that is connected to a computer.

你会被带到一个与电脑相连的碗形仪器前。

- One eye is tested at a time.

一次检查一只眼。

- There is a handpiece connected to the machine.

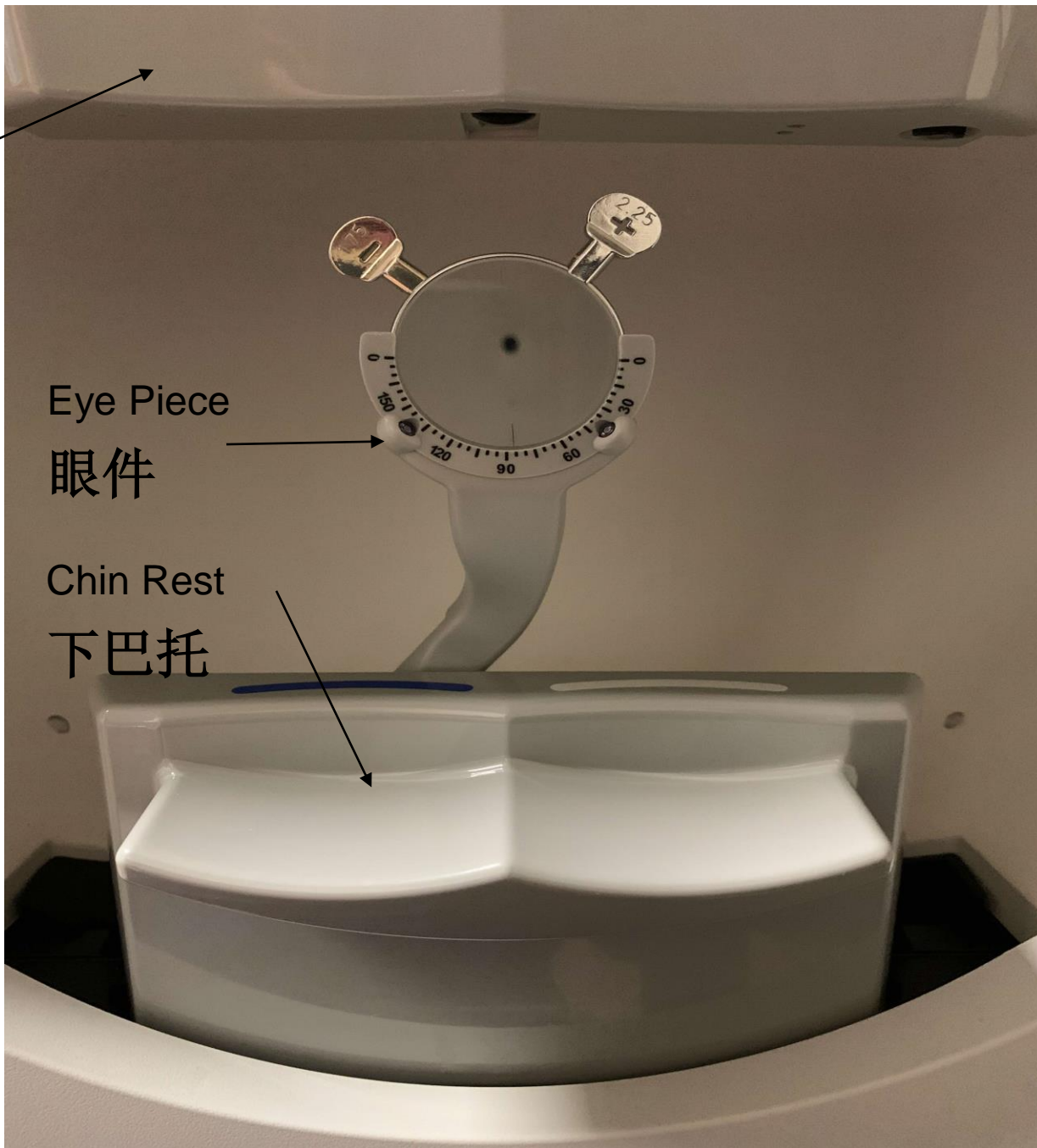
一个手柄与机器相连。



Forehead Bar
前额托

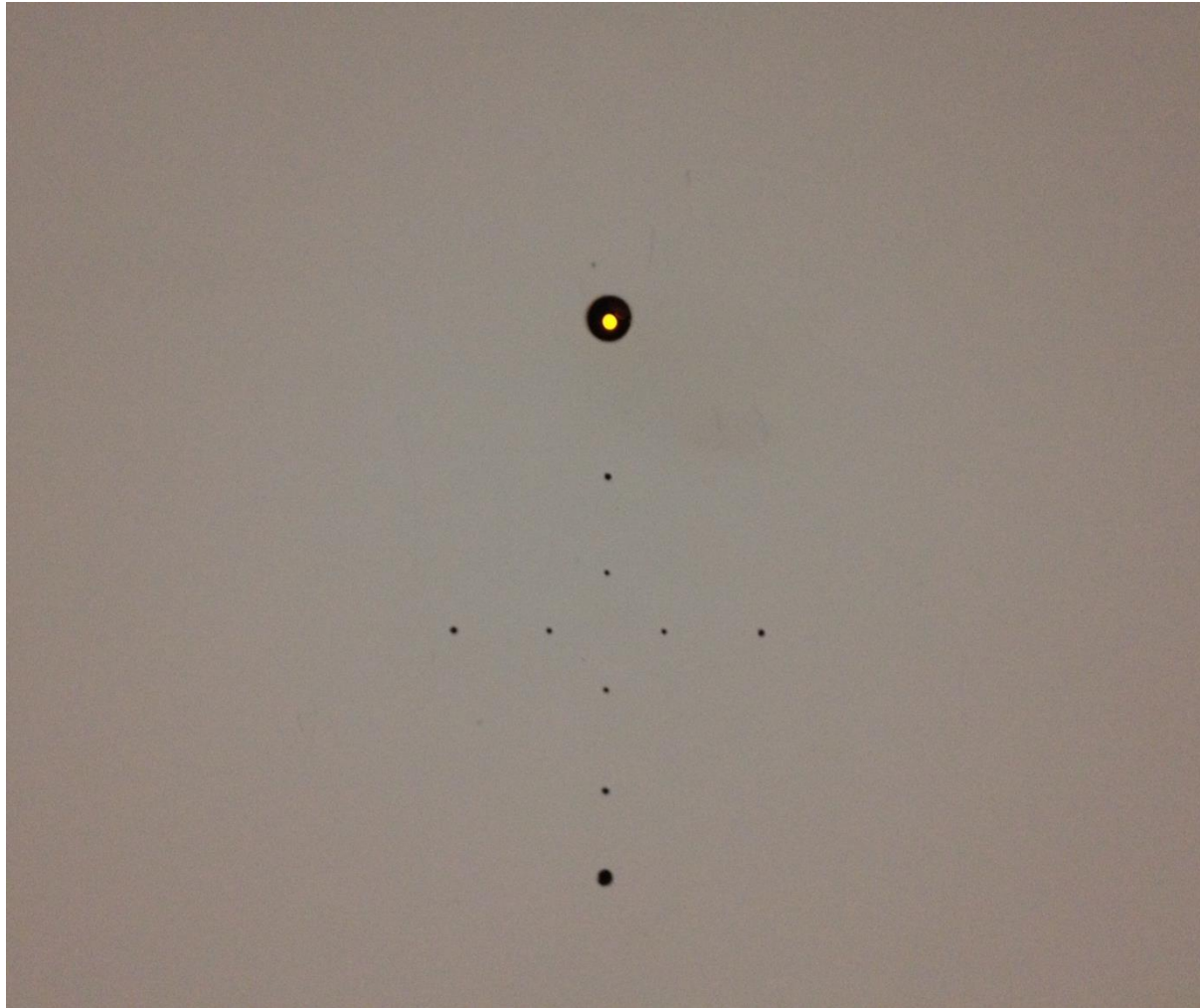
Eye Piece
眼件

Chin Rest
下巴托



This Is What You Will See

你将会看到



- Always focus on the orange dot.

需要您注视橙色灯光点。

- You will then see a series of white dots without moving your eyes.

当你看到周围出现白色灯光点时，请不要移动您的眼睛，总是注视橙色灯光点。

- Every time you see a white dot, you should press the button on the handpiece.

每次您看到白点，请按手柄上的按钮。



Do's 需要做的

- You may pause the test if you are tired by pressing and holding the button and releasing it when you are ready to resume the test.

如果你感到疲乏，可以一直按着按钮不放，这样就可以暂停检查；松开按钮就可以继续检查。

- RELAX!
请放松！

Do's

需要做的

- Some dots are big while some are small.
白点有的大，有的小。
- Some dots are bright while some are dim.
有的比较亮，有的比较暗。
- PRESS the button when you see ANY dots:
Big, Small, Bright or Dim.
当您看到任何点都要按按钮，无论大、小、亮、暗。

Do's 需要做的

- Keep both eyes open.
保持双眼睁开。
- You may blink normally.
您可以正常的眨眼。
- You may hear some noises.
您可能会听到一些噪音。
- Make yourself comfortable.
让您自己舒服。

Don'ts

不要做的

- DO NOT move your eyes about to look for the white dots.
不要转眼去寻找白点。
- DO NOT press the button if you do not see a white dot even if you hear a sound.
如果您没有看到白点，即使听到声音也不要按按钮。

At The End 最后

- When the test ends, the technician will ask you to sit back and relax while the device analyze your test results.

当检查结束后，技术人员会让您坐着休息，仪器会分析你的检查结果。