

Care of Fresnel Prisms

1. What is a Fresnel Prism?

A Fresnel prism is a flexible plastic sheet that we can cut to the shape of the lens of your glasses to alleviate your double vision.

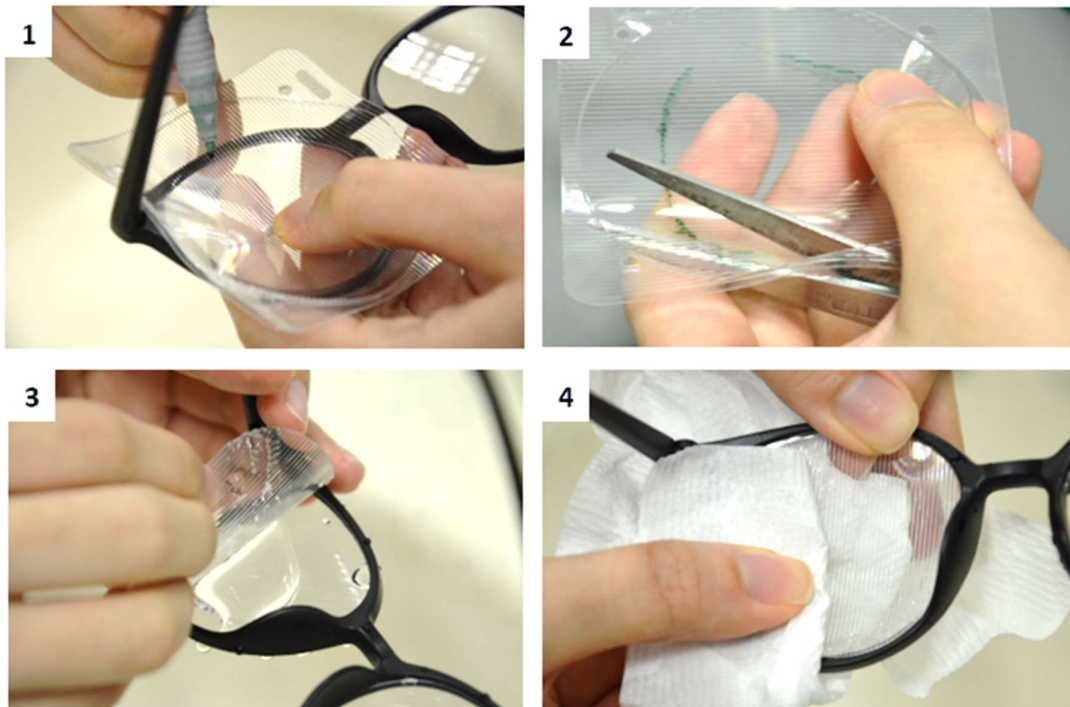
2. Will Fresnel Prism cure my double vision?

Fresnel prisms do not treat the underlying cause of double vision, but rather provide a **temporary** relief for your double vision. If your condition has been stable over a period of time, other permanent options such as grind-in prism glasses and strabismus surgery are available to alleviate your double vision.

3. How does Fresnel Prism fit onto my glasses?

The Orthoptist would have assessed your eye position and taken measurements to choose the correct strength of prism needed to help your double vision.

The prism will be cut to fit on to one or both lens(es) of your glasses.



The smooth side of the Fresnel prism is attached to inside of the lens using water and will remain firmly in place once dry. No glue or adhesive is needed or should ever be used if the prism comes loose.

The prism can be easily removed if it is unsuitable or needs to be adjusted as your double vision changes.



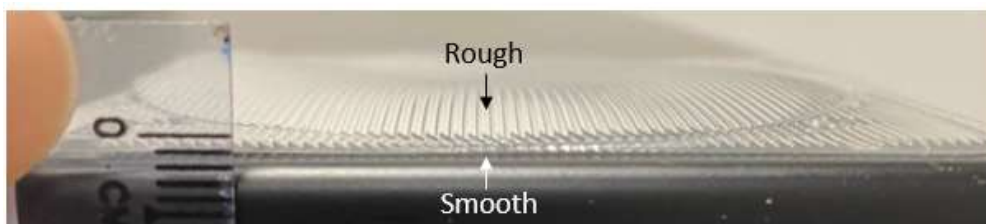
4. Will Fresnel Prism affect how well I can see?

There may be a slight blurring of vision in the eye looking through the prism, but with both eyes open, you should have comfortable single vision. There may be slight 'rainbow' effect when looking at lights – this is caused by the prism splitting up the light into its different colours.

The prism will help you to achieve single vision when looking straight ahead, but you may still be aware of double vision when you look in different directions. Try to move your head to look in different directions, rather than moving your eyes.

5. How to clean the Fresnel Prism?

The prism will be fitted correctly at your Orthoptic appointment. You may notice that it has a smooth side (that attaches to the lens) and a "bumpy"/rough side.



Using a gentle stream of tap water with a small amount of mild liquid hand soap and a soft-bristled toothbrush, brush gently between the grooves of the prism.

Do not use any glasses-cleaning product containing alcohol. This will make the prism cloudy.

Removing and replacing the prism

If the prism falls off or needs to be removed for cleaning, it can be replaced easily.

1. It is essential that the lines on the prism are in the same direction as when the prism was fitted by the Orthoptist and that the prism is replaced on the same lens of your glasses.
2. Whilst holding the glasses under a gently running tap, press the smooth side of the prism onto the lens of your glasses.
3. Press down gently, and squeeze out excess water and air bubbles.

6. How do I get a new Fresnel Prism?

Most optical shops do not sell Fresnel prisms. If you need to buy a new prism before your next eye appointment, please call your respective hospital's Appointments Line to make an "Orthoptic Appointment" for "prism fitting".